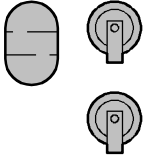
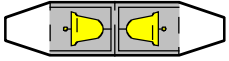
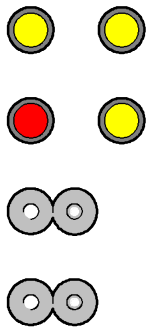
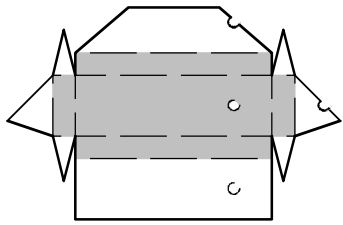




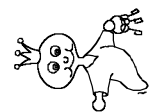
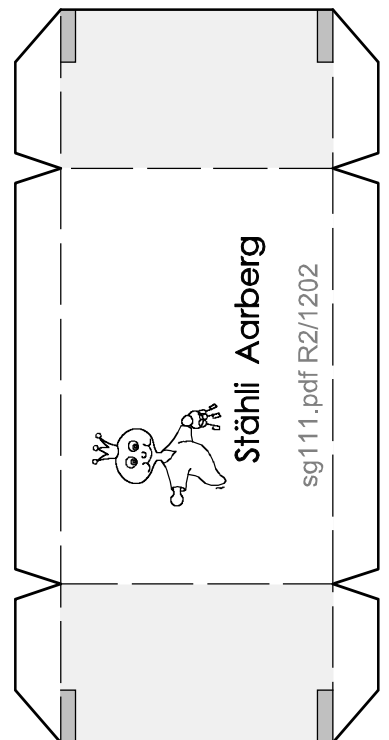
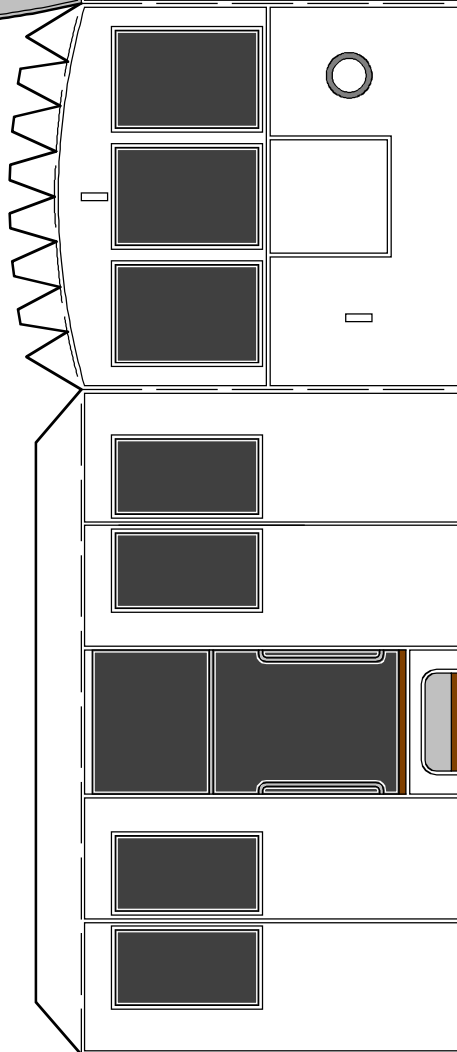
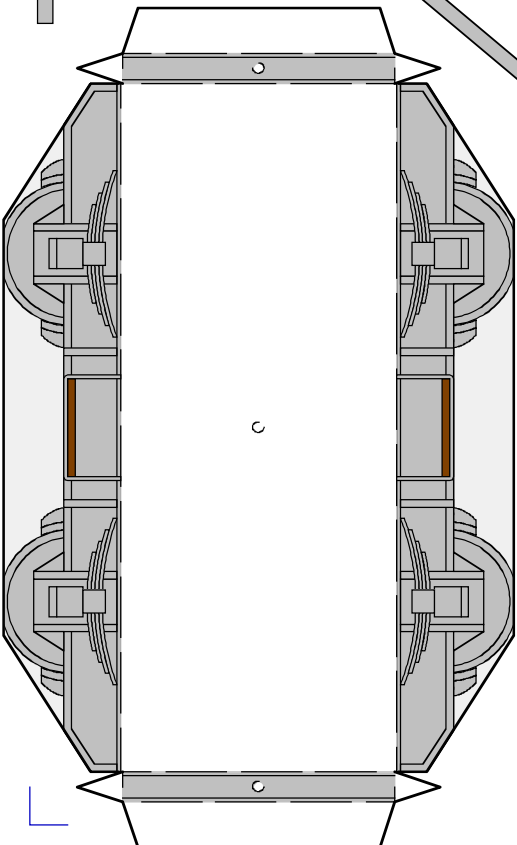
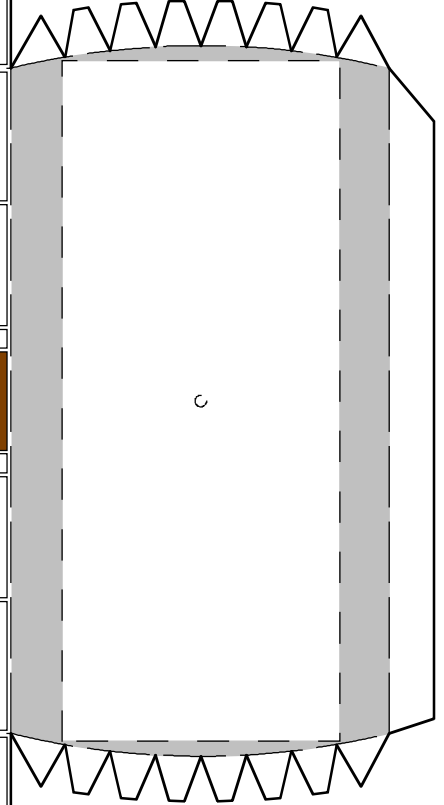
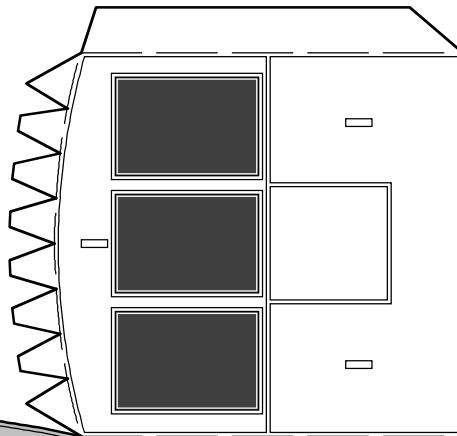
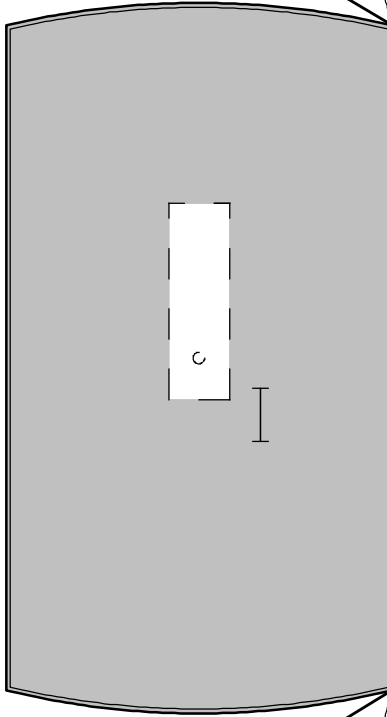
BLM Ge 2/2 1-3 zum Ausmahlen
Massstab 1:45, Nenngrösse 0

Montageanleitung siehe unter:
<http://BASTELBOGEN.jimdo.com/bastelbogen-von-hanspeter-staehli/downloads/bastelbogen-der-ersten-elektrischen-lokomotiven-der-schweiz>

sg111.pdf - 11.02.2012



Vorlage
Drahtbiegeteile



Stähli Aarberg

sg111.pdf R2/1202